

Shimadzu LCMS-029 Report

Sample Information

LCMS

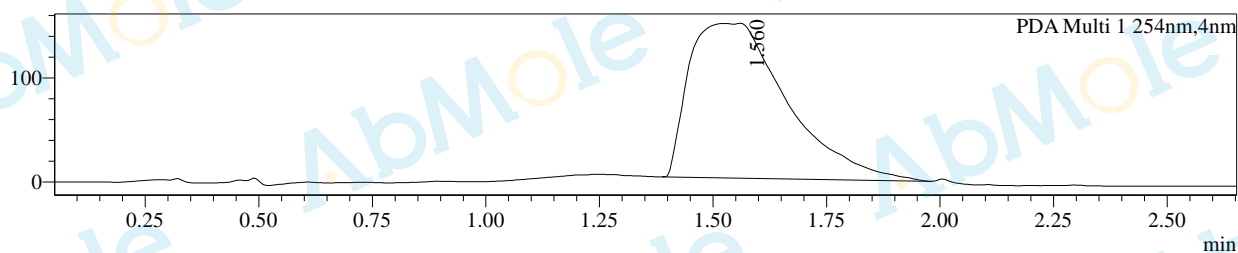
Acquired by : System Administrator
 Sample Name : M3690-Mefloquine hydrochloride-01-
 Method File : B 5%-95%-P-new - 2.6min.lcm

Date Acquired : 2021/9/3 12:47:43
 Injection Volume : 8
 Vial : 66

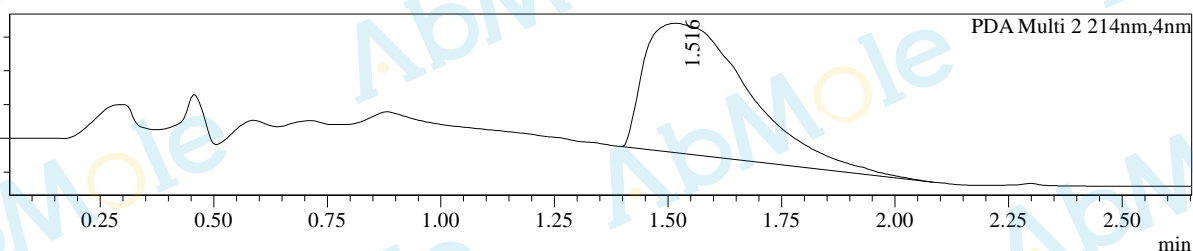
Column : Waters SunFire C18 50*4.6mm 5um 2.000ml/min 2.6min
 Pump A : 0.1% FA and 10% ACN in H2O
 Pump B : 0.1% FA and 10% H2O in ACN

Chromatogram

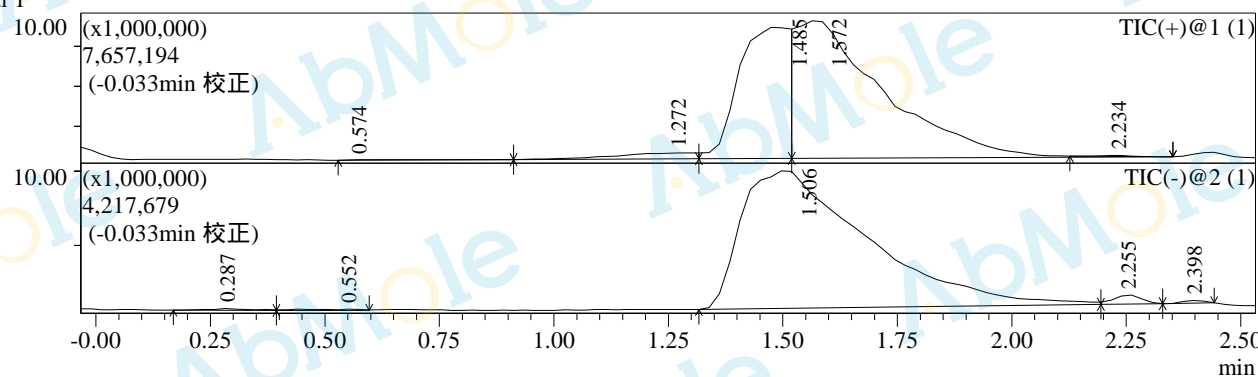
mAU



mAU



Signal 1



Integration Results for DAD

PDA Ch1 254nm

Peak#	Ret. Time	Height	Area	Area%
1	1.560	149217	2226812	100.000
Total		149217	2226812	100.000

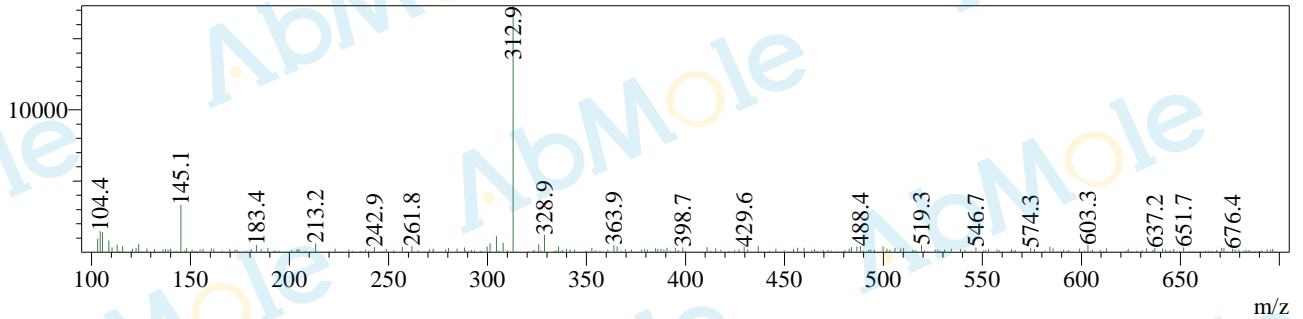
PDA Ch2 214nm

Peak#	Ret. Time	Height	Area	Area%
1	1.516	1916541	30953724	100.000

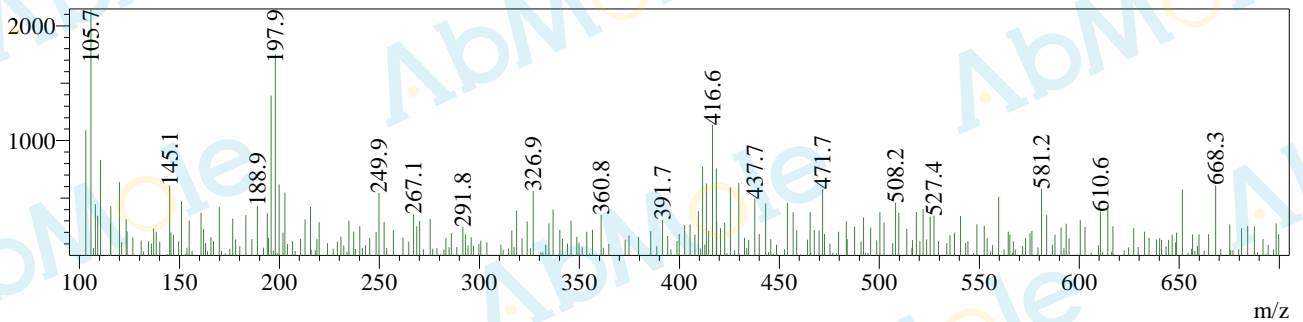
Peak#	Ret. Time	Height	Area	Area%
Total		1916541	30953724	100.000

Mass Spectrum

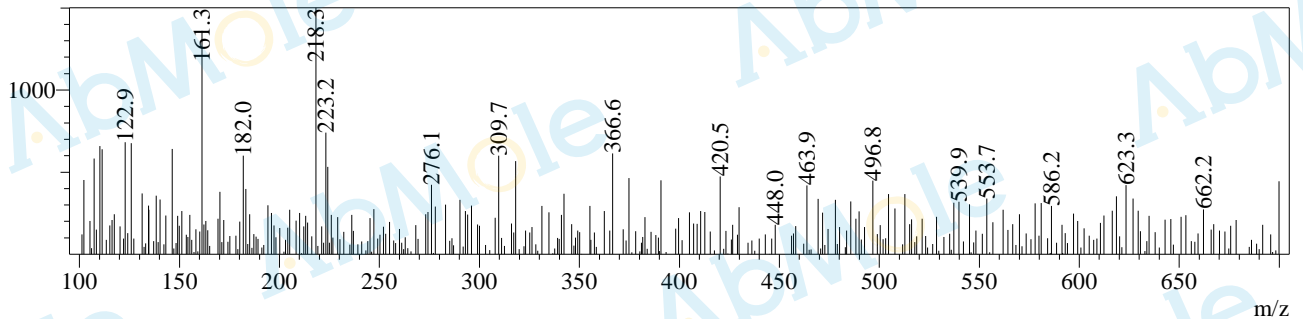
Rt=0.287min 负



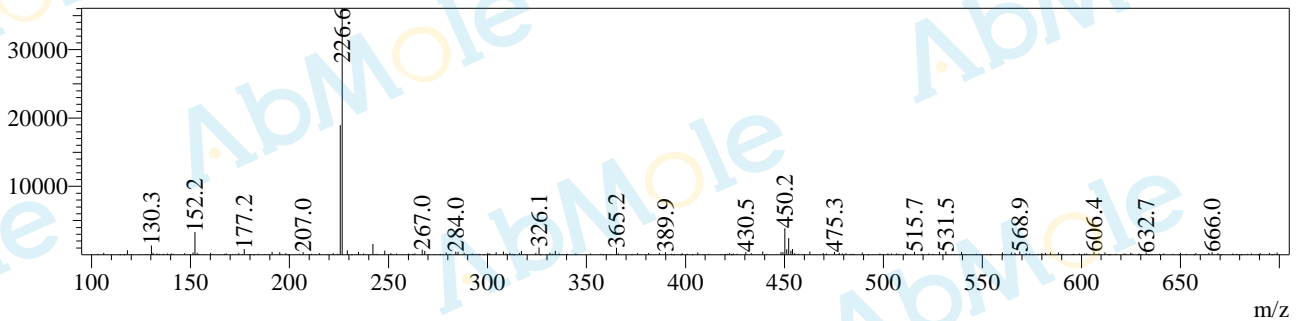
Rt=0.557min 负



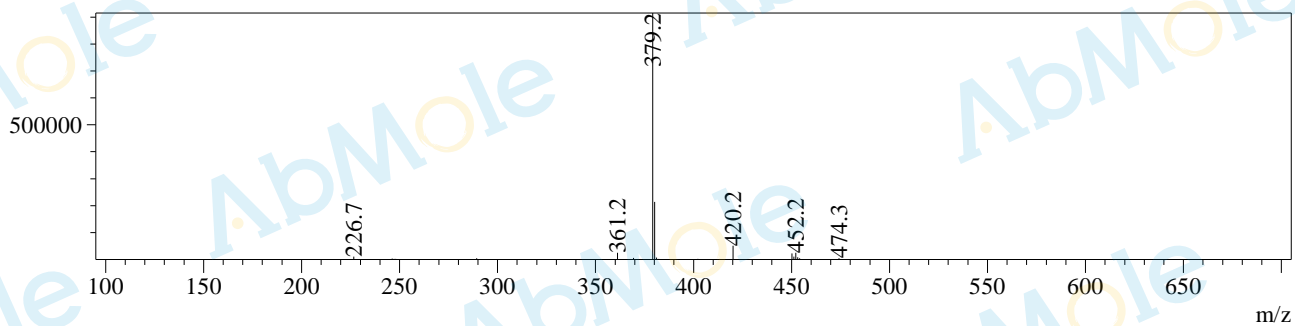
Rt=0.574min 正



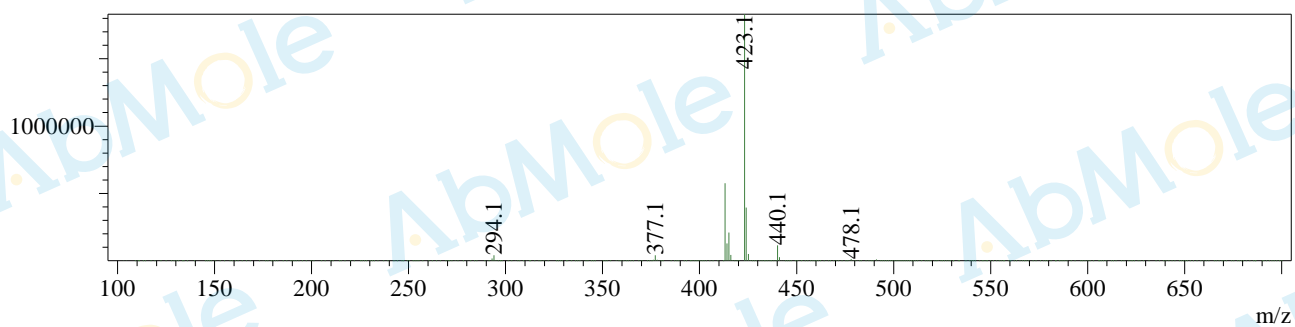
Rt=1.272min 正



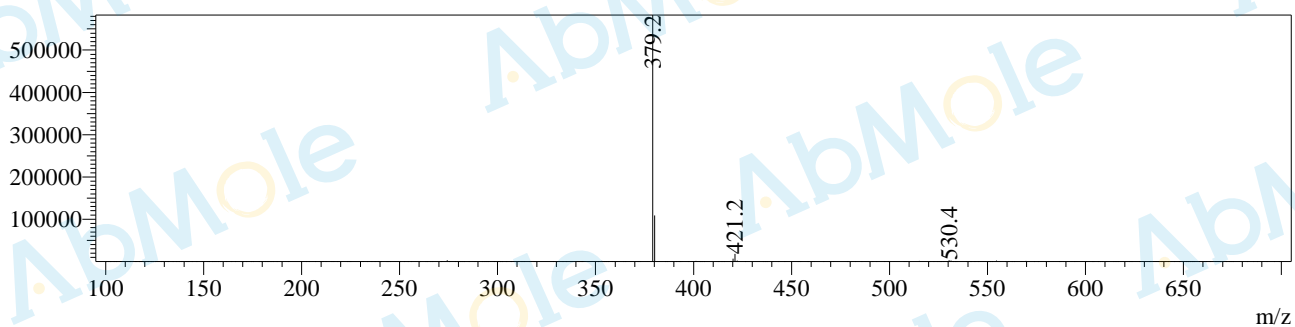
Rt=1.474min 正



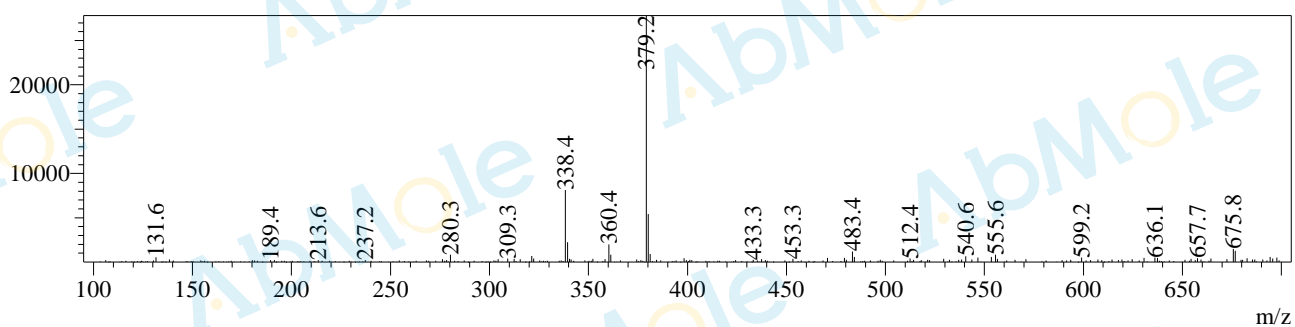
Rt=1.502min 负



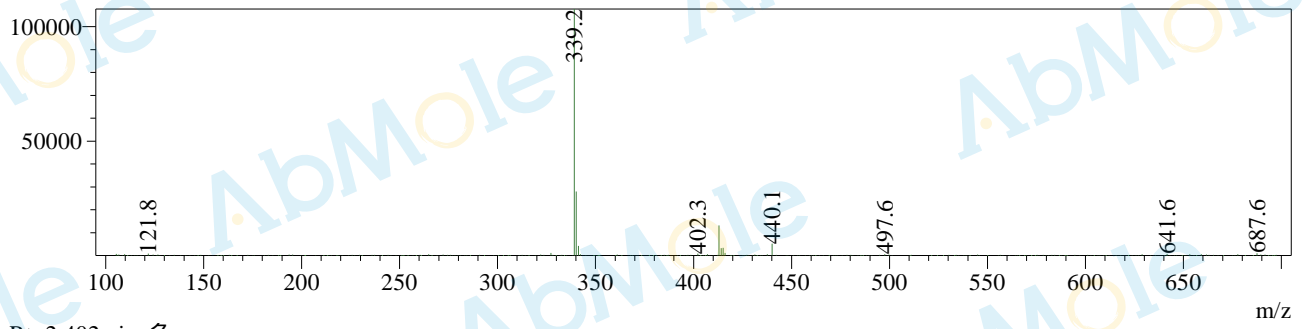
Rt=1.564min 正



Rt=2.217min 正



Rt=2.245min 负



Rt=2.402min 负

